

IOTZONE[®]

Smart lighting and energy-
saving management

16-Channel Web Relay User Manual



Zhenming Electronic Technology Co., Ltd

Smart lighting and energy-saving management <<<<<<

Zhenming Electronic Technology Co., Ltd

Product Introduction

1. Function Introduction

1.1 Manual control

You can use the original switch to manually switch and control household appliances.

1.2 Remote control

Control your device anytime, anywhere, and at will, even if you are far away from home.

1.3 Accurate feedback of control status

Whether you are a local area network or remote, whether you are network control or local switch, no matter who is operating, you can accurately see the status after execution.

1.4 Simpler to use

You don't have to worry about not being able to use it, nor do you have to worry about configuration errors that may cause the controller to malfunction. The controller supports hardware one click restore.

1.5 Simple to use

Support the multi-channel centralized management platform software provided by Zhenming Electronics on the PC side.

1.6 Rich language versions

The control platform is available in Chinese Simplified, Chinese Traditional, and English. As long as you contact our business, no matter how many you have, we can customize the language version for free.

1.7 Supports device interoperability

Two LAN devices are allowed to control each other, and two networked devices are allowed to control each other remotely.

1.8 Customer Customization

We can customize hardware, software, and system solutions according to the actual needs of customers.

1.9 Secondary Development

For enterprises, research institutions, and hardware enthusiasts, we provide publicly available TCP sockets and UDP communication protocols, making it easier for users to develop and more flexible.

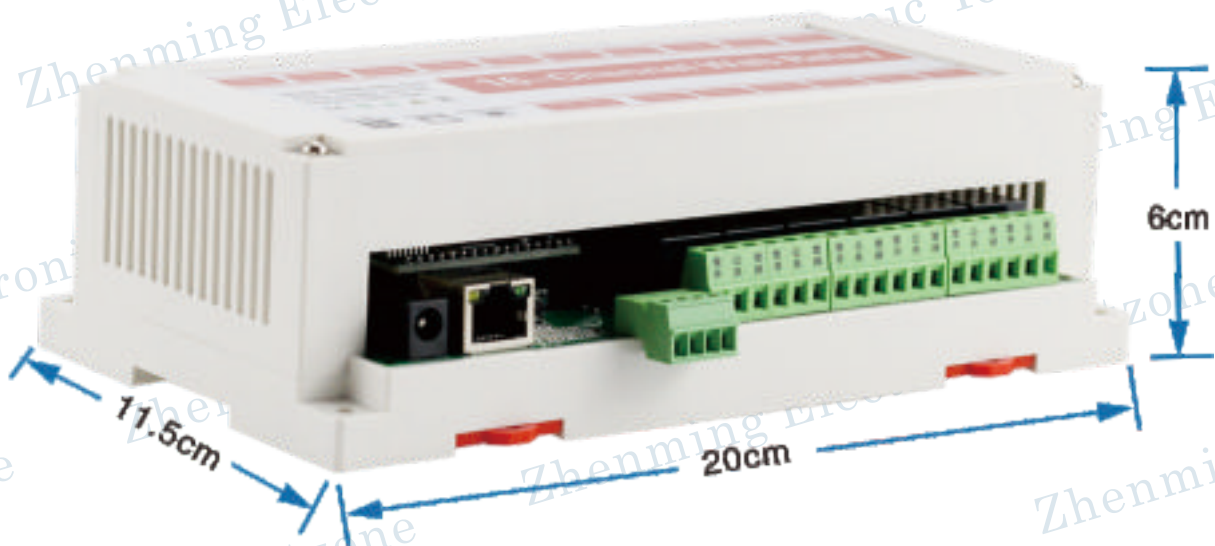


Smart lighting and energy-saving management <<<<<<

Zhenming Electronic Technology Co., Ltd

2. Technical parameters

- 2.1 Power supply voltage: 9~24V, standard 12V/1A power supply;
- 2.2 Output ports: 16 independent 220V passive output;
- 2.3 Input ports: a group of 845 input ports
- 2.4 Relay parameters: 10A 240V/AC
- 2.5 Standby power consumption: 0.8W, maximum power consumption: 3W
- 2.6 Maximum allowable voltage/current of output port: AC220V/10A, over 100000 times;
- 2.7 Working temperature: -25~80 degrees Celsius;
- 2.8 Storage temperature: -40~85 degrees Celsius;
- 2.9 Storage humidity: 5%~95% RH
- 2.10 Shell size: 200 * 115 * 60mm



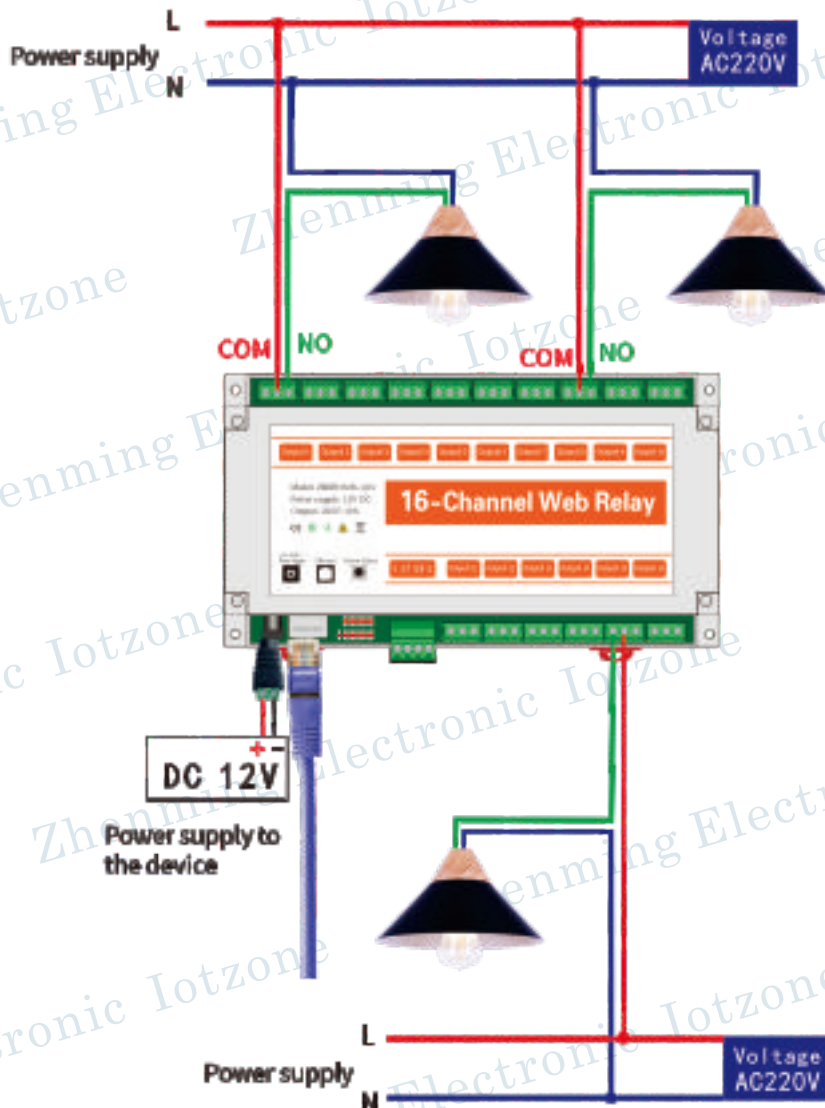
Smart lighting and energy-saving management <<<<<<

Zhenming Electronic Technology Co., Ltd

Hardware connection

1. The basic hardware connection is as follows:

AC 220V equipment wiring method



2. Interface Introduction

There are 16*3 terminal blocks on the PCB board, which are 1-8 sets of relay outputs. When the relay is closed, both terminal blocks are disconnected; In the relay open state, both terminal blocks are open. Relays are similar to switches — —

Below the PCB board, from left to right: external power input, network cable interface, initialization button, 485 port.

The power supply of the device is 12V.

The Initialize button is used to initialize the network parameters. The network port is connected to a router or computer communication.

The wiring is shown in the basic hardware connection diagram above.

Smart lighting and energy-saving management <<<<<<

Zhenming Electronic Technology Co., Ltd

Operation use

1. Installation instructions

- (1). Proper wiring is described by interface;
- (2). Power the controller 12/1A, plug in the network cable; Please wait 5 minutes after power-up;

2. Reset button use (one-click factory reset)

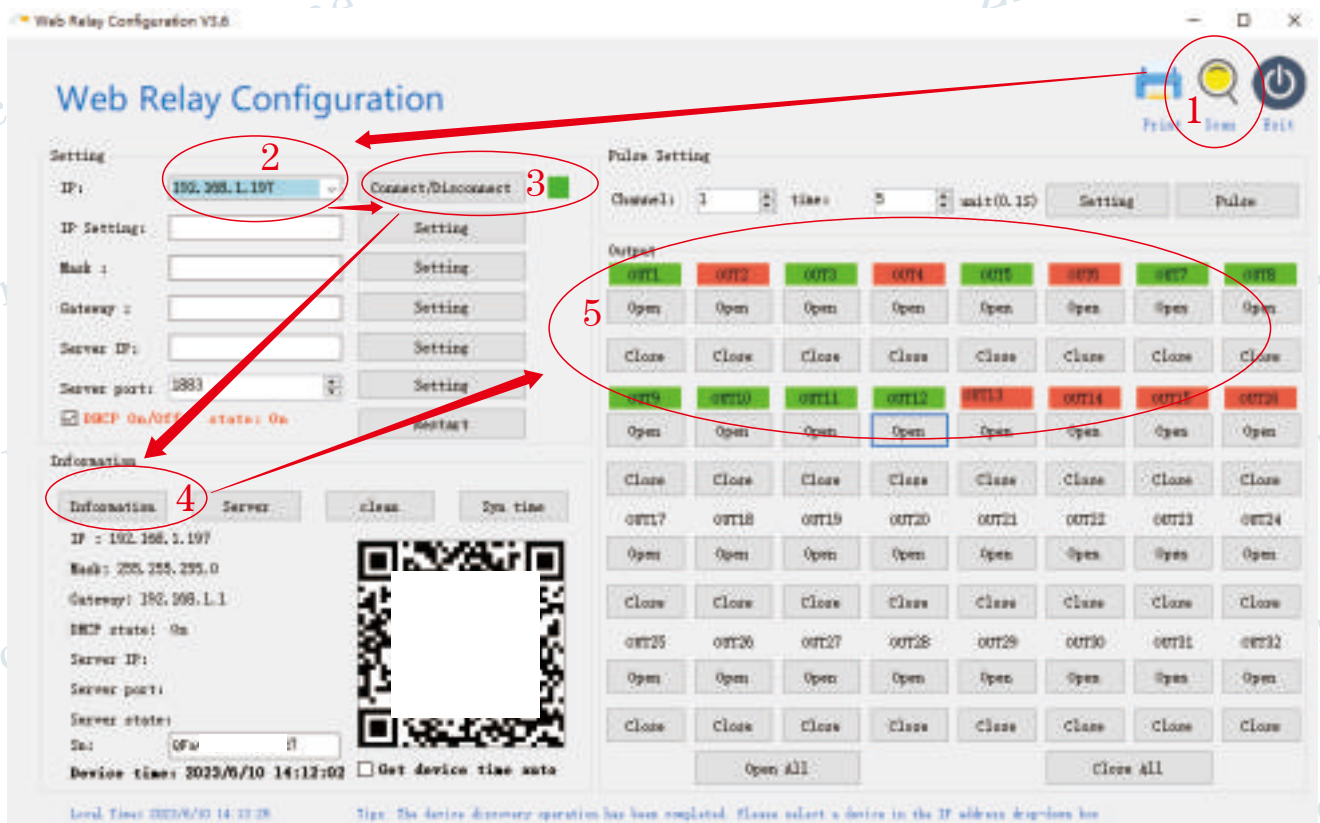
- (1) Emergency shutdown of all relays: in the working state, press the reset button to turn off all relays;
- (2) Reset parameters: power off the device, press and hold the black button next to the network port, power up the device, wait for 30 seconds, and then release the button. (*Please do it in order)

3. Instructions for use

*Power up the device and plug the network cable into the router.

*Open the "Zhenming Electronic Device Configuration Software-Web Relay Configuration" .

The operation steps are shown in the following figure:



Smart lighting and energy-saving management <<<<<<

Zhenming Electronic Technology Co., Ltd

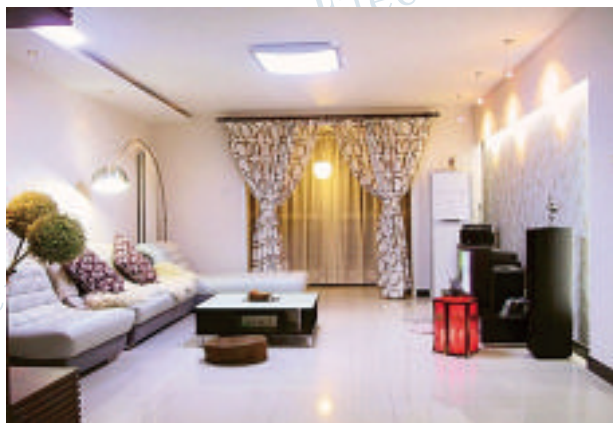
Secondary development

Support the "ZMRN0610-Q6 Communication Protocol .pdf" of Zhenming Electronics, which can be obtained from our company.

Application occasions

Home Furnishings

Forget to turn off the lights when you go out, you don't have to turn back halfway. Lying in bed in winter, don't worry about the kitchen lights still on. You can turn on your home appliances anytime, anywhere, as you please.



Office

You don't have to worry about turning off the water dispenser after work every day. Come to the office early to make a cup of coffee and start a new day of work. The company's lights, computers, water dispensers, etc. do not have to be in standby mode all the time, making the office smarter and more energy-efficient.



Industry

The machines in the workshop and the lights on the assembly line can be controlled reasonably by sitting in front of a computer, making it more energy-efficient.



Agriculture

The vegetables and fruits in the greenhouse need to be watered again. You don't need to run into the hot greenhouse, you can irrigate them at home.



Smart lighting and energy-saving management <<<<<<

Zhenming Electronic Technology Co., Ltd

Precautions for use

High voltage and strong current, please do not touch! Do not short-circuit! Please disconnect the power supply when wiring the controller! Please have a professional electrician perform the wiring operation!

After sales support

Three year warranty

Marketing Department:

TEL:(+86) 15061962326

Email:djbgreen@163.com

Technical Department:

TEL: (+86) 18651957324

Email: 286115417@qq.com